



DECEMBER 2014

Newsletter of the Northern Virginia Chapter Construction Specifications Institute

IN THIS ISSUE

December Meeting Presentation	1
President's Message	2
Schedule of 2014-2015 Programs	2
Education and Certification	3
Electronic Communications	3
Member Anniversary Dates	3
Fire Classification for Toilet Partitions ..	4
Advertising in Novaspec	4
Past Presidents Listing	4
Solar Reflective Studies (Nov Review) ..	5
Form Based Codes (Oct Review)	6
Innovative Materials	7
Holiday Party	7
November Board Meeting Minutes	8
Leadership Contacts	9

DINNER MENU

Dinner Salad
 Choice 1: Chicken Florentine
 Choice 2: Crusted Mahi-Mahi
 Choice 3: Vegetarian Dish
 Dessert: Chef's choice

Prices

Members: \$18 + \$1.89 CC Fee
 Non-Members or Retired:
 \$48 + \$3.39 CC Fee
 Table Top: \$275 + \$14.74 CC Fee

Schedule

6 pm: Social hour
 7 pm: Dinner
 8 pm: Program

Location

Washington Dulles Airport
 Marriott Hotel,
 45020 Aviation Drive
 Sterling, VA 20166

CHAPTER MEETING DECEMBER 10, 2014

UTILIZATION OF RFID

(RADIO FREQUENCY IDENTIFICATION)
IN PROJECTS TODAY

Description: Radio Frequency Identification (RFID) is being utilized in many large construction projects in the country as way to enhance and expedite general contractors' daily reporting processes, monitor schedules, shift staffing, monitor safety, government compliance and resource management.

Learning Objectives: Upon completion, the participant will be able to understand:

- How GCs can utilize real time labor data to monitor the quality control of crews, crew consistency factors and resource allocations in the field.
- How the contractor can monitor and document local labor and minority compliance in real time, and verify population on site before and after required evacuation.
- How GCs can improve management of change impacts on projects more effectively and provide owners with accurate, supporting data for change orders.
- How having real-time labor reports provide the opportunity for general contractors, owners, construction managers and subcontractors can shift from responding to issues to preventing them.



Speaker: Patrick Thomas - Sales & Services,
Co-Founder - ADR Workforce Applications

Speaker description continued on page 2

Register for the meeting on the Chapter website <http://nova.csinet.org> by noon December

Schedule of FY2015 Chapter Meetings and Presentations

September 16, 2014

SNMAAHC Museum tour
Cynthia Heimann/Henry Doyle

October 8, 2014

Form Based Codes
Erik Aulestia

November 12, 2014

Solar Reflectivity Analysis for
Curtainwall Buildings
Vicente Montes

December 10, 2014

Utilization of Radio Frequency
Identification in Projects Today
Patrick Thomas

January 14, 2015 Anniv Banquet

Metro Silver Line Update
Kevin Volbrecht

February 11, 2015

Value Engineering
Deborah Mc Pherson

March 11, 2015

Trends in Architectural Education
Randy Ott, Dean Catholic Univ.

April 8, 2015

Laser Leveling Earth Moving
Tom McConnell/Jesse Oak

May 13, 2015

Air Quality Control
Mike Clancy

June 10, 2015 Awards Banquet

2nd Annual Trade Show, Hors
d'Oeuvres, Desserts, & Awards
Mike Clancy

July 2015

Board Transition and Summer
Planning Meeting

Topics subject to change.



PRESIDENT'S MESSAGE

Luigi Grande, *NOVA CSI President*

Dear CSI Members,



It is a beautiful time of the year; we have many holidays to celebrate: First Thanksgiving followed by Christmas. By the time you will be reading this writing Thanksgiving festivity will be already gone, however the Board of Directors and I would like to take this opportunity to express our gratitude to you and your loved ones. This festivity gives us the opportunity to appreciate and express our gratitude to all those with whom we have worked together and have had a fruitful association. We truly appreciate your dedication and hard work, and we thank you for that.

Now, when I reflect on the Christmas day, I am astonished to witness that this festivity is celebrated as a major event and a public holiday in many countries around the world, including many whose populations are mostly non-Christian. Countries such as Japan, where Christmas is popular despite there being only a small number of Christians, have adopted many of the secular aspects of Christmas, such as gift-giving, decorations, and even Christmas trees.

There are some countries, however, where Christmas is not a formal public holiday to mention a few: Afghanistan, Algeria, Israel, Kuwait, Morocco, Saudi Arabia, Somalia (even though at one time in history there was a strong Italian influence there), Turkey, United Arab Emirates, Vietnam, and Yemen. Christmas celebrations around the world can vary markedly in form, reflecting differing cultural and national traditions.

In Italy, for instance, people hold religious processions in the days preceding Christmas. In my opinion, this is a beautiful "freedom of religious expression" and a fulfilling event to participate. In other countries, secular processions or parades featuring Santa Claus and other seasonal figures are often held. Family reunions and the exchange of gifts is a widespread feature of the season. Gift giving takes place on Christmas Day in most countries. Others practice gift giving on December 6, Saint Nicholas Day, and January 6, Epiphany. My kids were truly spoiled since they were getting presents on both days.

Please allow me to suggest the following gift ideas whether or not you are a Christian: To your enemy, forgiveness. To an opponent, tolerance. To a friend, your heart. To a customer, service. To all, charity. To every child, a good example. To yourself, respect.

Happy Holidays everyone! This is the blessed season which engages the whole world in a conspiracy of love!

Luigi



SPEAKER DESCRIPTION CONTINUED FROM PAGE 1

Patrick Thomas is an accomplished construction executive with 30 years of commercial construction experience. He has a proven track record of building large commercial construction projects on time and within budget. He has nine years of on-site management experience with Clark Construction and 19 years of Preconstruction, Estimating, and Executive Operations with HITT Contracting. He utilized ADR technology to save The Peterson Companies \$4 Million on the Liberty Crossing 1 Project.

"You can't Manage what you don't Measure™"
pthomas@softwareadr.com - (571)481-0737❖

**NOVA MEMBER
ANNIVERSARY DATES**

November 2014

- Ewing, Dell 48 years
*Mid Atlantic Construction
Specialties*
- Berchenko, Joseph 26 years
ARCOM Master Systems
- Brosnahan, Paul 20 years**
ARCOM Master Systems
- Supekar, Suresh 18 years
Dewberry Design Group
- Downey, William 14 years
Downey & Scott
- Heimann, Cynthia 9 years
Kishimoto.Gordon.Dalaya
- Jakovics, Marty 3 years

**RENEWAL DATE
REMINDERS**

December 2014

- Joseph Berchenko 12/31/2014
- Paul Brosnahan 12/31/2014
- Daniel Cammer 12/31/2014
- William Downey 12/31/2014
- Umakant Gajjar 12/31/2014
- John Geniesse 12/31/2014
- Aziz Ghani 12/31/2014
- Jason McKay 12/31/2014
- Grant Rogers 12/31/2014
- Thomas Soles 12/31/2014

January 2015

- Michael Clancy 1/31/2015
- Henry Doyle 1/31/2015
- William Rains 1/31/2015



EDUCATION AND CERTIFICATION



**John Geniesse, NOVA CSI Education/Technical/
Certification Committee Co-Chair and First Vice President**

Certification Exams: Need help studying? CDT, CCS, CCPR and CCCA. The Baltimore Chapter is offering Professional Development and Certification Seminars for certifications, beginning in January of 2015 through March. Visit their website for a schedule and detailed information. www.csibaltimore.org.

Webinars: 90-minute interactive telephone/Internet education sessions. Receive Continuing Education Credits for attending.

December 3, 2014 - Reducing Condensation and Thermal Bridging With Fluid Applied Coatings

December 17, 2014 - Marketing trends and Advantages of Fleece-Backed Membranes and Urethane Adhesives

2015 Dates to Remember:

CSI Academies, San Francisco, CA - *April 16-18, 2015.*

MARC 2015, Concordville, PA - *April 30-May 3, 2015* at Best Western Plus Hotel.

CSI Construct and Annual Convention, St Louis - *September 30- October 3, 2015.*

Visit www.csinet.org to find out more about these CSI Educational Opportunities: ❖

ELECTRONIC COMMUNICATIONS

Jesse Oak

NOVA CSI Electronic Communications Committee Chair and President-Elect



Mailing List: We continue to work on the mailing list to keep current. Korey Phipps is now coordinating the list so please forward any changes to your information to Korey at KPhipps@pbheeryamericas.com or myself at oakj@pbworld.com to keep our mailing lists up to date. I transferred back to Parsons Brinckerhoff so please use the email in the previous sentence if you need to reach me.

Web Page: Please forward any suggestions or information to include in our update of the Chapter website. Any information or help would be appreciated; just let me know. The monthly newsletters are now located on the website for reference.

Eventbrite: Included with the Eventbrite invitation are a few FAQs added to help with ordering. If you have suggestions or other FAQs, please let us know. We send monthly meeting invitations using the official email the Institute has on file for you, so if are not receiving the invitations, please go to the CSI website database and correct your contact information.

Forms: New forms continue to be created for use by the Chapter and can be found in the Chapter's Google drive. Please contact Deb MacPherson for access. Suggestions for new or modified forms are always welcome.

Advertising: We are looking for anyone interested in advertising in our monthly newsletter and webpage. Please contact the Chapter at csinorthernva@gmail.com for requirements and rates. We hope to start this as soon as we receive orders. ❖

Past Presidents of Northern Virginia CSI

Listed by Fiscal Year Dates

1992 William C. Pegues
 1993 William C. Pegues
 1994 Joseph A. Wintz III*
 1995 Henry Doyle
 1996 Steve Szoke **
 1997 Michael Clancy
 1998 Gloria Buchanan
 1999 Brian Trimble
 2000 Jean Carr ***
 2001 Robert Morris III
 2002 William Pegues
 2003 David Lorenzini
 2004 Mary-Ellen Pfiester
 2005 Marshall Moss
 2006 Diane Pittman
 2007 Alan Geary
 2008 Alan Geary
 2009 Jason McKay
 2010 Jason McKay
 2011 Paul Brosnahan
 2012 Deborah MacPherson
 2013 Deborah MacPherson
 2014 Luigi Grande

* Senior Lecturer at Clemson University, South Carolina.

** Relocated to Illinois

*** Retired to Florida, no longer a member of CSI



FIRE CLASSIFICATIONS FOR TOILET PARTITIONS?

Mike Clancy, Co-Chair, Education/Technical/Certification

Have you ever heard of such a thing? Well, you should have by now, because the 2006 International Building Code (IBC) established a fire classification requirement for toilet partitions. The fire classification is to be tested by ASTM E-84, known in layman's terms as the tunnel test. The International Code Council, responsible for the IBC, decided that toilet partitions should no longer be considered furniture and should now be considered an Interior Wall and Ceiling Finish which require a fire classification.



Fast forward to the IBC 2009 and there was a change in this requirement. The new code requires toilet partitions made from high density polyethylene (HDPE/solid plastic) to pass the NFPA 286 test, known as the corner room test. This is a more stringent test and is a pass/fail test and does not establish a fire classification. All other toilet partition material still needs to have a fire classification based on ASTM E-84.

So the next time you are writing your toilet partition specifications make sure you include these requirements and documentation from the manufacturer, and that their material meets the current codes. ❖

ADVERTISING IN NOVASPEC BEGINS IN JANUARY 2015

Business card size ads will be displayed on a space-available basis starting in the January 2015 issue of *NOVASPEC*, and distributed to all members of three CSI chapters which normally receive monthly issues of *Novaspec*. In addition, a company logo will be posted on the Chapter website during the ad subscription period. Rate will be \$200 for one business card size ad displayed in 10 issues. The ads may not necessarily be displayed on consecutive months, which means the ads could run for more than a year. There are 10 issues per year. Questions: Contact the Chapter at csinorthernva@gmail.com.

Original art must be provided in business card size (3-1/2 inches wide by 2 inches high) for use in the newsletter. Color is acceptable. Also submit a company logo in jpg format for use on the website. Logos will be adjusted to a common size for display. Orders must be sent to deloren@verizon.net along with artwork, check made payable to Northern Virginia Chapter CSI, and contact information. Deadline for the January 2015 issue is the 20th of December.

If you would like to display your products or services at one of our monthly meetings, contact Mike Clancy, mclancy1@verizon.net. Table Top Fee is \$275 + \$14.74 Credit Card Fee. Besides a table top display during Social hour, you will given five minutes to speak to the attendees during introductions at dinner and get a one month ad display in *NOVASPEC*. ❖

Your ad could be here.

(actual size)

Submission deadline for January
2015 issue is December 20.

NOVEMBER MEETING PRESENTATION - MINIMIZING THE IMPACT OF REFLECTIVITY FROM BUILDINGS

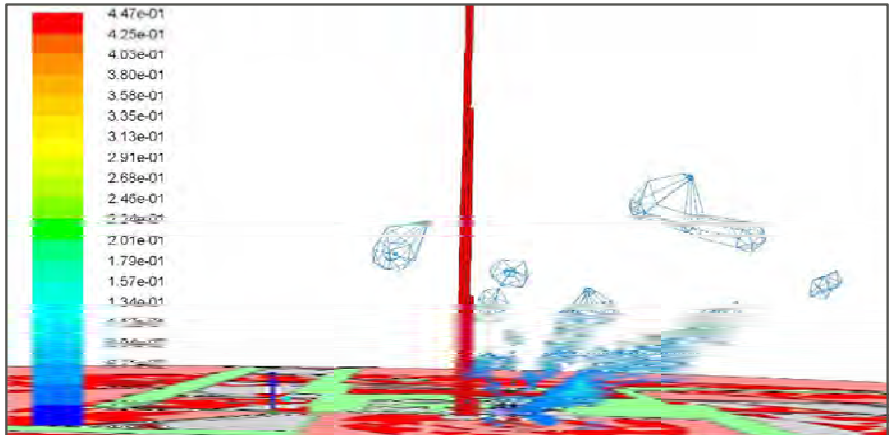
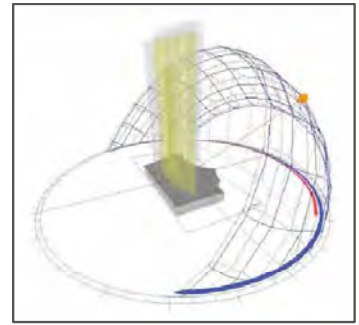
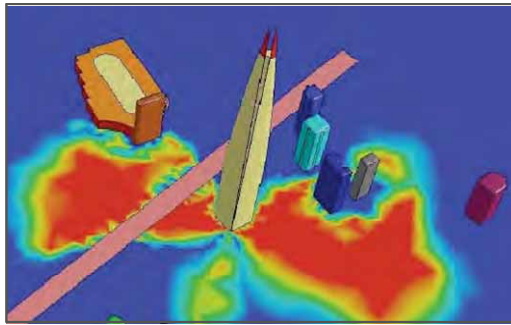
SOLAR REFLECTIVITY STUDIES

Traditional building façade design takes into account sunlight/natural daylight that passes through transparent areas of the façade. The impact of sunlight reflected from building surfaces, and on surrounding buildings and landscapes, has recently been given equal consideration in façade design.

CDC performs detailed engineering analysis via Computational Fluid Dynamics (CFD) to address the angle and intensity of reflected sunlight from a building's façade.

- CDC applies CFD simulations to determine whether reflected glare will present problems for motorists, pedestrians and adjacent buildings.
- Simulation extends through a solar year, identifying potential number of days, hours, and even minutes within an identified day that glare could present comfort issues.
- CDC CFD simulations also identify the path of solar reflections, shadowing and glare intensity.
- Using this information, CDC applies its design expertise to help our Clients develop glare mitigation strategies that are sensitive to overall design goals and reduce negative impacts on adjacent buildings, motorists and pedestrians
- A study can be executed on a single building in isolation, or may target building/s including the surrounding neighborhood. ❖

Ed: The presenter, Vicente Montes-Amoros, is a Façade Engineer for Curtainwall Design and Consulting (CDC).



DETAILING INNOVATION **MARC 2015** Concordville, PA - April 30-May 3
www.marc2015.org



Jerry Yudelson
 President
 Green Building Initiative
 Friday, May 1, 2015 Luncheon

KEYNOTE SPEAKERS



Francis Rabuck
 Futurist, visionary Communicator
 Technology/Strategy Research Analyst
 Saturday, May 2, 2015 Luncheon

OCTOBER MEETING PRESENTATION - FORM BASED CODES

What is a Form Based Code?

A well-crafted form-based code is the most effective form of development regulation for shaping pedestrian-scaled, mixed use and fine-grained urbanism.

Is it a Form-Based Code?

Is the code's focus primarily on regulating urban form and less on land use?

Is the code regulatory rather than advisory?

Does the code emphasize standards and parameters for form with predictable physical outcomes (build-to lines, frontage type requirements, etc.) rather than relying on numerical parameters (FAR, density, etc.) whose outcomes are impossible to predict?

Does the code require private buildings to shape public space through the use of building form standards with specific requirements for building placement?

Does the code promote and/or conserve an interconnected street network and pedestrian-scaled blocks?

Are regulations and standards keyed to specific locations on a regulating plan?

Are the diagrams in the code unambiguous, clearly labeled, and accurate in their presentation of spatial configurations?

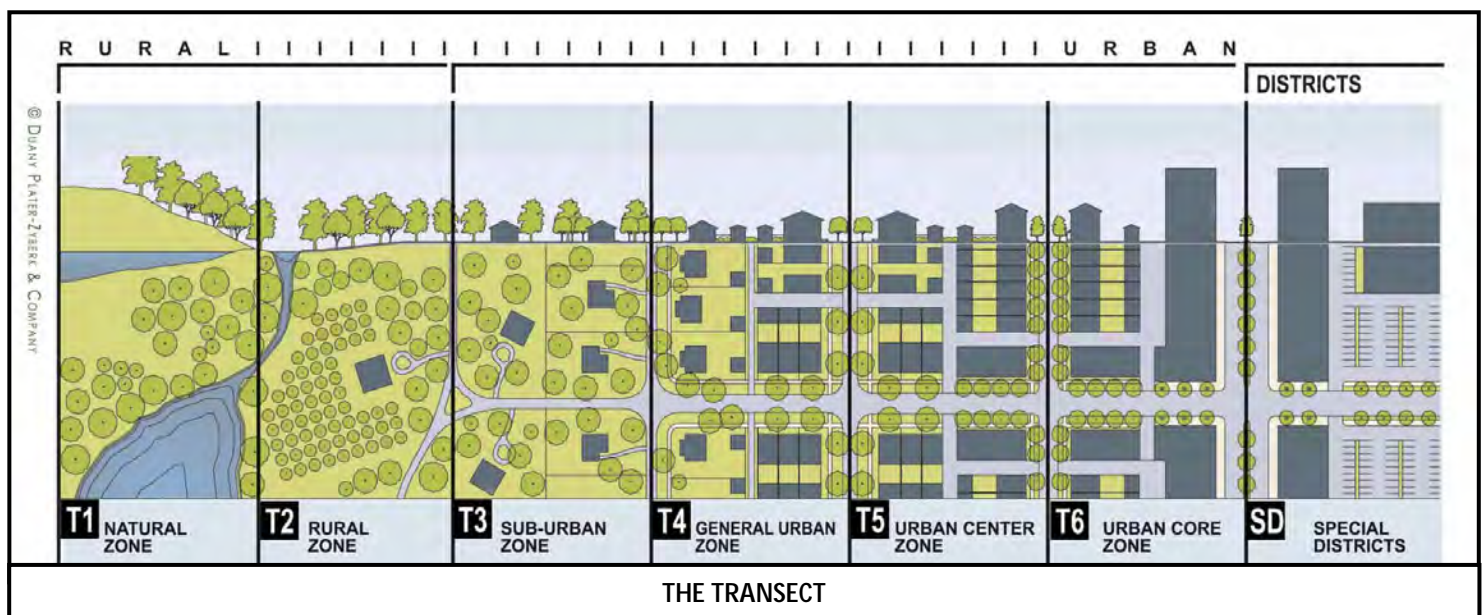
Ten Characteristics of Sprawl

1. Segregated Land Uses
2. Low Density Zoning
3. Auto Dependency
4. Lack of Connectivity
5. Jobs Housing Mismatch
6. Lack of Housing Choices
7. Loss of Rural or Ag. Lands
8. Lack of Significant Centers
9. Visual Clutter/ Parking Dominates
10. Pedestrian Hazardous

The Regulating Plan

The Regulating Plan is a precise document that establishes the framework for the neighborhood by:

- (1) Locating public street alignments
- (2) Locating required civic and public spaces
- (3) Identifying street types
- (4) Locating build-to-lines and setbacks
- (5) Identifying frontage occupancy
- (6) Identifying building heights
- (7) Locating specific elements
- (8) Identifying streets with permitted alley openings
- (9) Identifying public frontage types
- (10) Identifying private frontage types
- (11) Identifying street trees



INNOVATIVE MATERIALS

More on the future of materials. This is a continuation of our series on state of the art products that may trigger your curiosity.



(Our readers are encouraged to submit their experiences with these types of products for publication in future issues.)

DC Metro Chapter of CSI and Building Enclosure Council | DC

Cordially invite you to our

Holiday Party

**Tuesday, December 16
5:30 P.M. – 8:30 P.M.**

**1700 New York Avenue NW
Suite 100
Washington, DC 20006**



Bring a new and unwrapped toy for
Toys for Tots! Receive a raffle ticket
for your donation for PRIZES!



RSVP by Friday, December 12th <https://www.eventbrite.com/e/dc-metro-chapter-csi-and-becdc-holiday-party-tickets-14355233891>

SUMMARY OF OCTOBER BOARD MEETING MINUTES

Call to Order:

- Jesse Oak, President Elect of the NOVA Chapter, called the November 2014 regular meeting of the Board of Directors to order on Wednesday, 12 November 2014 at 5:17 pm at the Washington-Dulles Airport Marriott Hotel.
- **President's Report and Discussion Items**
 - **2018 MARC:** Lorenzini provided a brief recap of progress on MARC 2015 hosted by the Philadelphia Chapter and scheduled for April 30-May 3, 2015.
 - **News Letter:**
 - NOVA SPEC is suffering from delayed submittal of information to Dave. The deadline of Wednesday following the meeting was reiterated.
 - Lorenzini proposed soliciting a dessert sponsor (similar to a Table Top arrangement) at our dinners for consideration by the chapter. Meal costs will remain as they are and the income will accrue to the treasury. The sponsor will also be provided an opportunity to present his product or service.
 - No advertising requests for the newsletter have been received. Lorenzini is considering a plan to sell a "monthly advertising package" on a space available basis.
 - The board is being solicited for short articles of general interest to include seminars and travel.
 - Philadelphia CSI has requested publication of MARC2015 announcements in NOVASPEC.
 - **Treasurer:** Pittman provided current account balances: Checking: \$6,578.45; CD: \$5,131.81; Total: \$11,710.26, not including EventBrite revenues for the last meeting.
 - Oak reported an issue with EventBrite now requiring additional identification information before payment can be released to the chapter.
- **Committees**
 - **House:** Jason McKay, Chair: McKay reported his personal move to the Richmond vicinity but still plans to be traveling to the NOVA area as part of his new territory.
 - **Membership:** Dan Cammer, Chair:
 - Our current membership total is 59 with eight pending renewals.
 - Secretary Montgomery will provide a new listing of non-affiliated CSI members in our area to Cammer.
 - **Programs:** Cynthia Heimann, Chair:
 - Heimann updated the upcoming program list (published below).
 - She also provided the monetary donations collected during the September event to the treasurer. The \$260 that was collected will be provided by Chapter check to the Paralyzed Veterans Program.
 - The program committee is researching future tour events based upon the September event.
 - **House - Jason McKay, Chair:**
 - McKay reported the 2015 contract for our meetings has been executed with the Marriott.
 - The November meeting has 24 reservations for dinner at present.
 - PPG Coatings is sponsoring a Table Top tonight.
 - **Electronic Communications - Jesse Oak, Chair:**
 - Oak noted that he will be able to "publish" the upcoming newsletter and the December presentation in a timelier manner than this month.
 - **Education/Technical/ Certification - Mike Clancy/John Geniesse, Co-Chairs:**
 - Heimann said that she has staff members at her firm who are interested in the CDT exam. Clancy reported that the Baltimore chapter is conducting a class in hopes that the interested persons might avail themselves of that opportunity.
 - Oak reported the November and December programs as being finalized and prepared for advertising. He also noted that the January program may be adjusted to a more general topic to accommodate the annual chapter anniversary banquet.
 - Potential additional topics of interest:
 - Laser Leveling Earth Moving (Tom McConnell/Jesse Oak)
 - Superfast construction.
 - Curtain wall buildings for special purpose facilities.
 - Prefabricated buildings.
 - Best practices and procedures for Fire Proofing of Elements (Jason McKay).
 - Jobsite BIM technology



Meeting Minutes continued on page 9.

Chapter Board of Directors

President	Luigi Grande.....	lgrande@ch2m.com
President-Elect	Jesse Oak	joak@pbheeryamericas.com
Immediate Past Pres.	Deborah MacPherson ..	dmacpherson@cannondesign.com
1st Vice President	John Geniesse	jgeniesse@stanleyworks.com
2nd Vice President	Tom McConnell.....	tom@construxva.com
Secretary	Mike Montgomery.....	mbmonty@embarqmail.com
Treasurer	Diane Pittman.....	diane.pittman@cox.com
Director, 2013-2014	Robert Trafton	rtrafton@nehmer.com
Director, 2013-2014	Ken Lyons.....	k_lyons@verizon.net
Director, 2014-2015	Cynthia Heimann	cheimann@kgdarchitecture.com
Director, 2014-2015	Dan Cammer	d.cammer@rebarchitects.com
Director, 2014-2015	Mike Clancy	mclancy1@verizon.net
Director, 2014-2015	Bill Rains	bill.rains@sherwin.com

Chapter Committees

Awards	Bill Rains	bill.rains@sherwin.com
Editor	David Lorenzini	deloren@verizon.net
Electronic Comm.	Jesse Oak	joak@pbheeryamericas.com
E.T.C.*	Mike Clancy/John Geniesse, Co-Chairs mclancy1@verizon.net / jgeniesse@stanleyworks.com *(Education/Technical/Certification)	
Finance	Diane Pittman.....	diane.pittman@cox.com
Historian	Deb MacPherson	dmacpherson@cannondesign.com
House	Jason McKay	jmckay@isolatek.com
Membership	Dan Cammer	d.cammer@rebarchitects.com
Nominating	Deb MacPherson	dmacpherson@cannondesign.com
Programs	Cynthia Heimann	cheimann@kgdarchitecture.com

Middle Atlantic Region

President Margaret Chewning.....mgcccs@spexresources.com

Institute

Director Raymond Gaines.....gaines5@ntelos.net

2015 MARC IS COMING



CSI Mid-Atlantic Region Conference 2015
BEST WESTERN PLUS Concordville Hotel

Save the date—April 30 to May 3, 2015—Visit www.marc2015.org

Editor's Corner

Comments regarding this newsletter are welcome. Original contributed articles are also welcome. Submit them in Word DOC format to deloren@scip.com. Articles should be concise and to the point, accompanied by graphics, if applicable, in JPG format. ❖

Editorial Policy: NOVASPEC acts as a moderator without approving, disapproving, or guaranteeing the validity of accuracy of any data, claim, or opinion appearing under a byline or obtained or quoted from an acknowledged source. The opinions expressed by authors do not necessarily reflect the official views of the Northern Virginia Chapter CSI or The Construction Specifications Institute.

All material for each issue must be received by the Editor 3 weeks before the next Chapter meeting date.

The Construction Specifications Institute (CSI) is a nationwide, nonprofit, technical organization dedicated to the advancement of construction technology through communications, education, research, and service. Founded in 1948, CSI provides a forum for architects, engineers, specification writers, contractors, suppliers, and others in the industry.

Our mailing address: Northern Virginia Chapter CSI, PO Box 223415, Chantilly, VA 20153, 703-402-0903, <http://nova.csinet.org/>

Copyright 2014 - Northern Virginia Chapter CSI

BOARD MEETING MINUTES (CONTINUED FROM PAGE 8)

- 2009 to 2012 IBC changes.
- Bill Rains and John Geniesse offered to provide quick notice backup programs to cover commitments that fall through.
- There are a number of local trade associations that sponsor Speaker's Bureaus. These are good sources for topics but most require honoraria.
- Code Search Methodologies, continued by Diane Pittman and Dan Cammer
- LEED 4.0 / Living Buildings.
- **Adjournment** - There being no further business to come before the board, President Elect Oak declared the meeting adjourned at 5:47 pm. ❖